







**991.2 CARRERA S
CARBON FIBER FRONT LIP
INSTALL INSTRUCTIONS**

THE PROJECT

EASY	MODERATE	ADVANCED	PROFESSIONAL
			
BASIC SKILLS REQUIRED	SOME EXPERIENCE RECOMMENDED	ADVANCED SKILLS & EXPERIENCE REQUIRED	PROFESSIONAL SKILLS & SPECIALTY TOOLS REQUIRED

Basic skills and experience are recommended for this job, but we’re going to lay it out for you step by step, so even if you don’t have much “wrench” time under your belt, these instructions will make it easy for you. Only basic tools are required, but don’t forget to check out the tool list on Page 5, and make sure you have everything you need on hand before you begin. This install will take approximately 40 minutes to complete.

A couple of final points - Having access to a lift or ramps will make this install far easier. However, use low profile ramps to prevent damage to the front lip. Reading these instructions completely before you begin will help you plan out the job and manage your time better. Thank you for looking to Rennline for all of your performance and repair needs, we appreciate your business!

TABLE OF CONTENTS

Kit Contents..... [pg.4](#)

Required Tools and Equipment..... [pg.5](#)

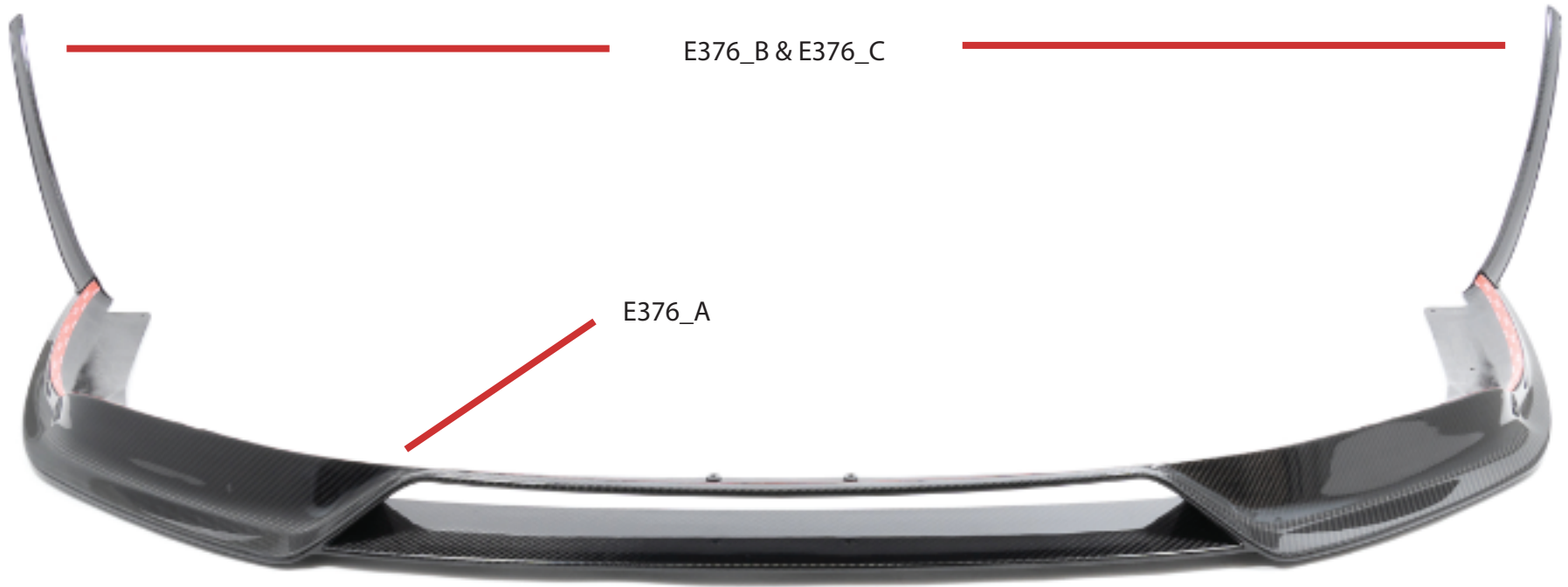
Shop Supplies and Materials..... [pg.6](#)

Installation and Safety Information [pg.7](#)

Part Location Overview..... [pg.8](#)

Installation Steps [pg.9](#)

KIT CONTENTS



REQUIRED TOOLS

Note: The tools required for each step will be listed by the step number throughout these instructions.

Standard Tool Recommendations: We recommend that you have a standard automotive repair tool set before beginning this installation. The following list outlines the basic tools and sets that will be used during this installation as well as most automotive service procedures.

- Torx Drive Set (optional)
- Torx Key Set
- Allen Key Set

SHOP SUPPLIES AND MATERIALS

Standard Shop Supply Recommendations: We recommend that you have a standard inventory of automotive shop supplies before beginning this or any automotive repair procedure. The following list outlines the basic shop supplies that we like to keep on hand.

- Hand Cleaner/Degreaser
- Pig Mats - for protecting your garage floor and work area from spills and stains
- Spray detailer - for rapid cleaning of anything that comes into contact with your paint such as brake fluid
- Micro Fiber Towels - for cleaning the paint on your car
- Latex Gloves - for the extra oily and dirty jobs
- Medium and High Strength Loctite Thread lock compound - to prevent bolts from backing out
- Anti-Seize Compound - to prevent seizing, galling, and corrosion of fasteners
- Aerosol Brake/Parts Cleaner - for cleaning and degreasing parts
- Shop Rags - used for wiping hands, tools, and parts
- Penetrating oil - for helping to free rusted or stuck bolts and nuts
- Mechanics wire - for securing components out of the way
- Silicone spray lube - for rubber components such as exhaust hangers
- Paint Marker - for marking installation positions or bolts during a torquing sequence
- Plastic Wire Ties/Zip Ties - for routing and securing wiring harnesses or vacuum hoses
- Electrical tape - for wrapping wiring harnesses or temporary securing of small components

INSTALLATION NOTES

- **RH** refers to the passenger side of the vehicle.
- **LH** refers to the driver side of the vehicle.
- Always use the proper torque specifications.
- If applicable to this installation, torque specifications will be listed throughout the document and at the end as well.
- Please read all of these instructions and familiarize yourself with the complete process **BEFORE** you begin.

GENERAL PREPARATION AND SAFETY INFORMATION

Rennline cares about your health and safety. Please read the following safety information. This information pertains to automotive service in general, and while it may not pertain to every job you do, please remember and share these important safety tips.

- Park your car in a safe, well lit, level area.
- Shut the engine off and remove the key from the ignition switch.
- Make sure any remote start devices are properly disabled.
- **ALWAYS** wear safety glasses.
- Make sure the parking brake is applied until the vehicle is safely lifted and supported.
- If using an automotive lift, be sure and utilize the factory specified lift points. Lifting a vehicle in an incorrect location can cause damage to the suspension/running gear.
- When lifting a vehicle using a jack, always utilize the factory specified lift points. Lifting a vehicle in an incorrect location can cause damage to the suspension/running gear. **ALWAYS** support the vehicle with jack stands.
- Always read and follow all safety information and warnings for the equipment you are using.



Never get underneath a vehicle that is supported only by a jack. Always make sure that the vehicle is securely supported on jack stands.

PART LOCATION OVERVIEW

Factory Bumper Molding Location
(Removed)



Mounting Holes For Front Lip

PREPERATION & MOUNTING

Step 1:

To begin the installation process first we will need to remove the factory molding attached to the bumper. There should be two screws mounting the molding to the car. Save these as they will be utilized in a later step. The molding should slide to the passenger side and then pull down to remove.



Step 2:

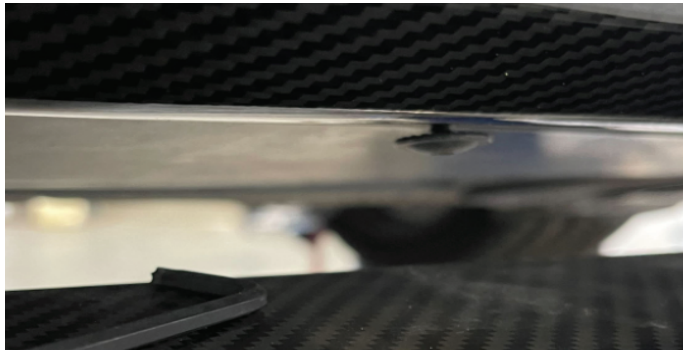
Next, wipe any debris from the paint surface the 3M tape will be mounted to. Also remove the screws in the marked locations. Using the provided screw, lightly mount the front lip to the car. Start peeling the 3M tape and hang the backing over the front lip and further tighten the screws down.



MOUNTING & ADHESION

Step 1:

Remove the remaining backing of the 3M tape and apply adequate pressure. Then use the remaining screws to mount the front lip to the car. You will need a Torx key to tighten the center points down.



Step 2:

Use the provided black passivated screws to lightly mount the fins to the front lip. Start peeling the 3M tape in the same manner as the main piece. Then tighten the screws and remove the remaining backing. Apply pressure and repeat for the opposite side. These are optional and are not required for installation, however we do recommend using the screws to plug the threaded hole to prevent corrosion and debris in the event one changes their mind to add them at a later date.

